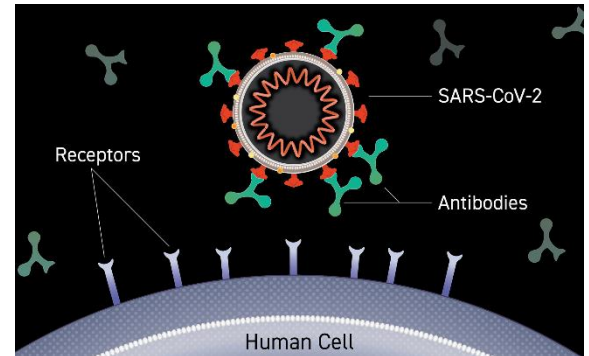


What is REGEN-COV (casirivimab and imdevimab) and how should we use it?

Taylor Mathwich, PharmD and April Yarbrough, PharmD, BCPS

What is REGEN-COV?

REGEN-COV (casirivimab and imdevimab) is a combination product of two monoclonal antibodies with potential to prevent COVID-19 by blocking the infectivity of SARS-CoV-2.¹ SARS-CoV-2 has a spike protein that is used to facilitate host cell attachment and invasion. Monoclonal antibodies, such as REGEN-COV, target the spike protein. They work by blocking the binding of the spike protein to the receptors on host cells, preventing the virus from causing infection.^{2,3}



Who is REGEN-COV for?

REGEN-COV can be used for the treatment of mild to moderate COVID-19 in adults and pediatrics (age greater than or equal to 12 and weighing greater than or equal to 40 kg) who are SARS-CoV-2 positive and who are at high risk of progression to severe COVID-19 (i.e. hospitalization or death).³

Patients at high risk of progression to severe disease include those who have a BMI \geq 85th percentile for their age and gender or a BMI $>$ 25 kg/m², sickle cell disease, chronic kidney disease, diabetes (Type 1 or Type 2), immunosuppressive disease or current immunosuppressive therapy, cardiovascular disease (congenital or acquired) or hypertension, chronic lung disease (COPD, cystic fibrosis, pulmonary hypertension, or moderate-severe asthma requiring daily controller medication), neurodevelopmental disorders (e.g. cerebral palsy), other conditions that confer medical complexity (genetic or metabolic syndromes and severe congenital abnormalities) or medical-related technological dependence (tracheostomy, gastrostomy, or positive pressure home ventilation).³

Additionally, the FDA expanded the emergency use authorization (EUA) of REGEN-COV to include use as post-exposure prophylaxis for individuals at high risk of acquiring SARS-CoV-2 infection and those at high risk of progressing to severe COVID-19.^{2,3}

When can we give REGEN-COV to inpatients?

REGEN-COV can be given to inpatients when they are hospitalized for a condition other than COVID-19, are found to be COVID-19 positive or recently exposed to COVID-19, and are at high risk of progression to severe disease.²

REGEN-COV is not indicated for patients who are hospitalized for COVID-19 or those who require oxygen therapy or increases in chronic oxygen therapy due to COVID-19. In these patients, remdesivir and dexamethasone may be considered.²

Why do we no longer use Bamlanivimab and Etesevimab?

Bamlanivimab and Etesevimab use was paused in June 2021 because of concern in effectiveness for the variants of COVID-19 (i.e. delta variant and beyond). In September 2021, the FDA announced enough data had been collected to support the re-instatement of Bam/Etes as an option for antibody infusion. The current preferred antibody for non-native variants in the southeastern US is REGEN-COV (casirivimab 600 mg/imdevimab 600 mg).²

What are common side effects with REGEN-COV?

Patients should be monitored for 1 hour following administration of REGEN-COV. Adverse effects include hypersensitivity reactions (including anaphylaxis), infusion related reactions, rash, diarrhea, nausea, dizziness, and pruritis.³

How does this effect COVID-19 vaccination?

In patients that receive REGEN-COV, COVID-19 vaccination should be deferred for at least 90 days. However, prior COVID-19 vaccination does not preclude the patient from receiving REGEN-COV.²

How is REGEN-CoV given to patients?

REGEN-COV is administered via an intravenous (IV) infusion for 30 minutes. It is important to remind patients and caregivers that it is a monoclonal antibody, so while infusion reactions are rare, they can occur. For this reason, patients are required to be monitored for at least 1 hour after infusion. No other laboratory monitoring is required at this time.

COVID Antibody Infusion

P	D	Y	A	D	C	L	T	C	E	T	D	T	A
N	S	D	T	M	O	N	O	C	L	O	N	A	L
O	E	O	I	D	I	V	L	B	N	N	O	I	A
P	B	B	I	O	I	B	C	L	T	O	T	M	I
N	I	I	I	D	O	E	N	C	M	I	Y	D	L
T	M	T	O	D	D	S	O	L	S	S	C	E	B
O	O	N	M	E	N	M	N	I	T	U	O	V	B
T	A	A	O	N	N	M	N	I	D	F	O	I	V
B	I	O	U	T	P	A	T	I	E	N	T	M	E
R	E	G	E	N	E	R	O	N	L	I	E	A	C
B	N	N	L	G	L	I	D	A	T	N	I	B	N
I	A	M	N	N	B	L	O	N	A	T	R	A	I
I	I	V	C	A	S	I	R	I	V	I	M	A	B
D	Y	B	L	D	E	I	V	R	U	E	F	P	E

INFUSION
ANTIBODY
REGENERON
IMDEVIMAB
DELTA
COVID
CASIRIVIMAB
MONOCLONAL
OUTPATIENT

Play this puzzle online at : <https://thewordsearch.com/puzzle/2819713/>

References

1. Regeneron. FDA Expands Authorized Use of REGEN-COV (casirivimab and imdevimab). 2021. Available at: <https://investor.regeneron.com/node/25361/pdf>
2. COVID-19 Treatment Guidelines Panel. Coronavirus Disease 2019 (COVID-19) Treatment Guidelines. National Institutes of Health. Accessed [Aug 2021]. Available at <https://www.covid19treatmentguidelines.nih.gov/>.
3. Food and Drug Administration. Fact sheet for healthcare providers: emergency use authorization (EUA) of REGEN-COV (casirivimab and imdevimab). 2021. Available at: <https://www.fda.gov/media/145611/download>.